



01623 827 827821 awsafety.co.uk sales@awsafety.co.uk

COMPLIANCE CORNER

YOUR MARCH 2023 SAFETY NEWSLETTER

COMPANY NEWS & UPDATES

NEW CONTACT METHODS

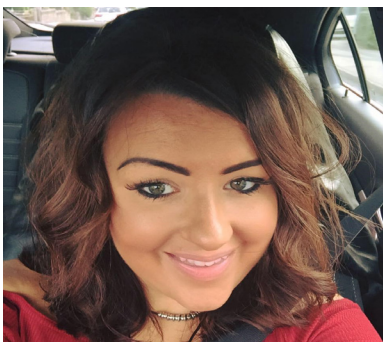
DUE TO THE STREAMLINING OF THE TEAM AND TO ENSURE CLIENT REQUESTS AND TIMESCALES FOR RESPONSES ARE MANAGED, WE HAVE MADE THE DECISION TO DIRECT ALL CALLS AND EMAIL TRAFFIC AWAY FROM THE BRAMPTON OFFICE.

ALL EMAILS WILL BE DEALT WITH BY OUR CONSULTANCY COORDINATOR WHO WILL THEN LOG THE REQUEST, ALLOCATE TO THE APPROPRIATE CONSULTANT AND FOLLOW UP TO ENSURE COMPLETION.

THE EXISTING BRAMPTON LANDLINE NUMBER NOW DIVERTS TO THE EDWINSTOWE OFFICE TO ENSURE THAT ANY INCOMING CALLS ARE PROMPTLY ANSWERED AND ALL REQUESTS ARE REQUESTED TO BE EMAILED TO OUR CONSULTANCY INBOX

EMAIL: CONSULTANCY@AWSAFETY.CO.UK

NEW TEAM MEMBERS



A WARM WELCOME TO
NAOMI TURNBULL
OUR NEW SALES
EXECUTIVE

&

PAIGE FREEMANTLE
OUR CONSULTANCY
ADMINISTRATOR



COMPANY NEWS & UPDATES



**MENTAL
HEALTH
FIRST AID
WORKSHOP**

FRIDAY 17TH MARCH
10.30AM OR 1PM

Carrie Austin

THE CARRIE
PHOTOGRAPHY
MENTAL HEALTH

Mansfield
Museum

**COME VISIT US AT
MANSFIELD MUSEUM
MARCH 17TH - FREE
MENTAL HEALTH
TASTER SESSION**

CLICK [HERE](#) TO BOOK

WHO CONTROLS YOUR FIRE SAFETY RISKS?

Take reasonable steps to reduce the risks associated with fire and ensure that there are suitable emergency procedures in place should a fire occur.

[BOOK A FIRE RISK ASSESSMENT TODAY](#)



HAVE YOU NOTICED ALL THE H&S RISKS?

Winter can sometimes bring the worst out in us especially whilst working in the cold. But its not just us who suffer from the elements. Machinery and buildings will begin to show there true colours in the winter months, but would you notice the safety risks?

[CONSIDER A H&S GAP AUDIT](#)



CONSTRUCTION CDM REGS ARE YOU UP TO SPEED ON THEM?

CDM Regulations 2015 place specific responsibilities on duty holders, including designers and contractors

[LET US GUIDE YOU THROUGH
THE CDM PROCESS](#)



PROSECUTION CENTRAL

PROSECUTION 1

Employee suffers significant ill health following 12 years of inadequately controlled use of vibrating tools. The construction firm partners have been fined as a result.

[SEE THE FINE AND CONTROL MEASURES](#)



PROSECUTION 2

Construction company in Leicestershire fined 80K after an employee suffers serious injuries falling through a fragile roof.

[CHECK OUT THE FINE & SENTENCE](#)



PROSECUTION 3

A building contractor has been sentenced after putting the public at risk.

[READ THE DETAILS](#)

